

# \$427,900 - 37 Wade Close, Red Deer

---

MLS® #A2246140

## \$427,900

4 Bedroom, 3.00 Bathroom, 1,203 sqft

Residential on 0.09 Acres

Westlake, Red Deer, Alberta

Down the alley from Westlake water park. This home is immaculate and ready to move into. Open floor plan up and a fully developed basement complete with wet bar. Everything master bedroom needs an Ensuite bath and a walk in closet for a total of 4 bedrooms and 3 baths. The rear deck is perfect for quiet evening or entertain your friends.

Built in 2005

### Essential Information

MLS® #	A2246140
Price	\$427,900
Bedrooms	4
Bathrooms	3.00
Full Baths	3
Square Footage	1,203
Acres	0.09
Year Built	2005
Type	Residential
Sub-Type	Detached
Style	Bungalow
Status	Active

### Community Information

Address	37 Wade Close
Subdivision	Westlake
City	Red Deer
County	Red Deer



Province Alberta  
Postal Code T4N 7E6

### Amenities

Parking Spaces 2  
Parking Off Street, Parking Pad, RV Drive

### Interior

Interior Features French Door, Kitchen Island, M  
Appliances Dishwasher, Electric Stove, M  
Heating Forced Air, Natural Gas  
Cooling None  
Has Basement Yes  
Basement Finished, Full

### Exterior

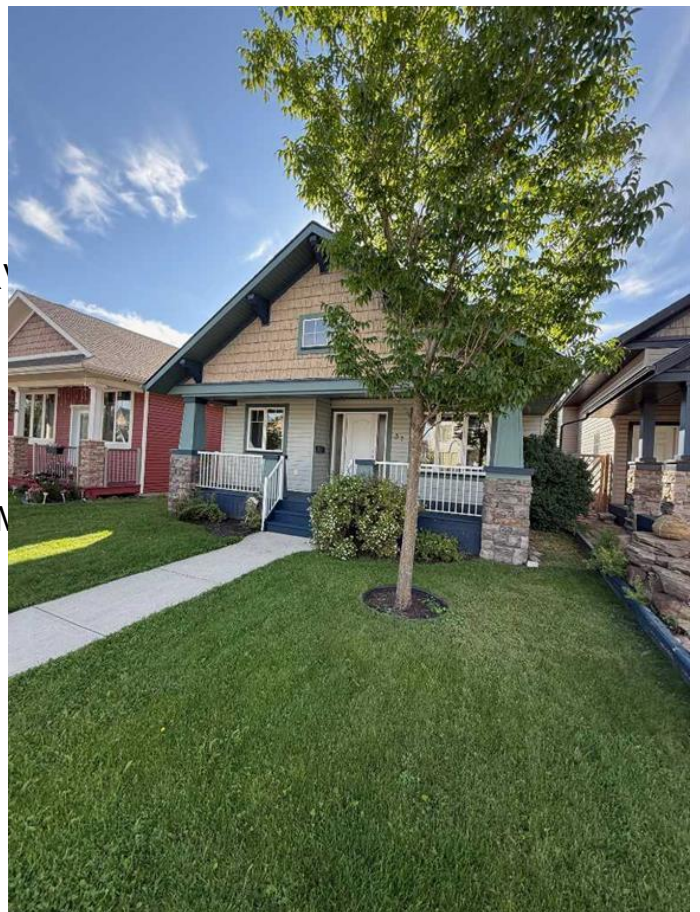
Exterior Features Private Yard, Storage  
Lot Description Back Yard, City Lot, Landscaped, Back Lane, Dog Run Fenced In  
Roof Asphalt  
Construction Vinyl Siding, Wood Frame  
Foundation Poured Concrete

### Additional Information

Date Listed August 4th, 2025  
Days on Market 2  
Zoning R-N

### Listing Details

Listing Office Century 21 Bravo Realty



Data is supplied by Pillar 9â„¢ MLSÂ® System. Pillar 9â„¢ is the owner of the copyright in its MLSÂ® System. Data is deemed reliable but is not guaranteed accurate by Pillar 9â„¢. The trademarks MLSÂ®, Multiple Listing ServiceÂ® and the associated logos are owned by The Canadian Real Estate Association (CREA) and identify the quality of services provided by real estate professionals who are members of CREA. Used under license.